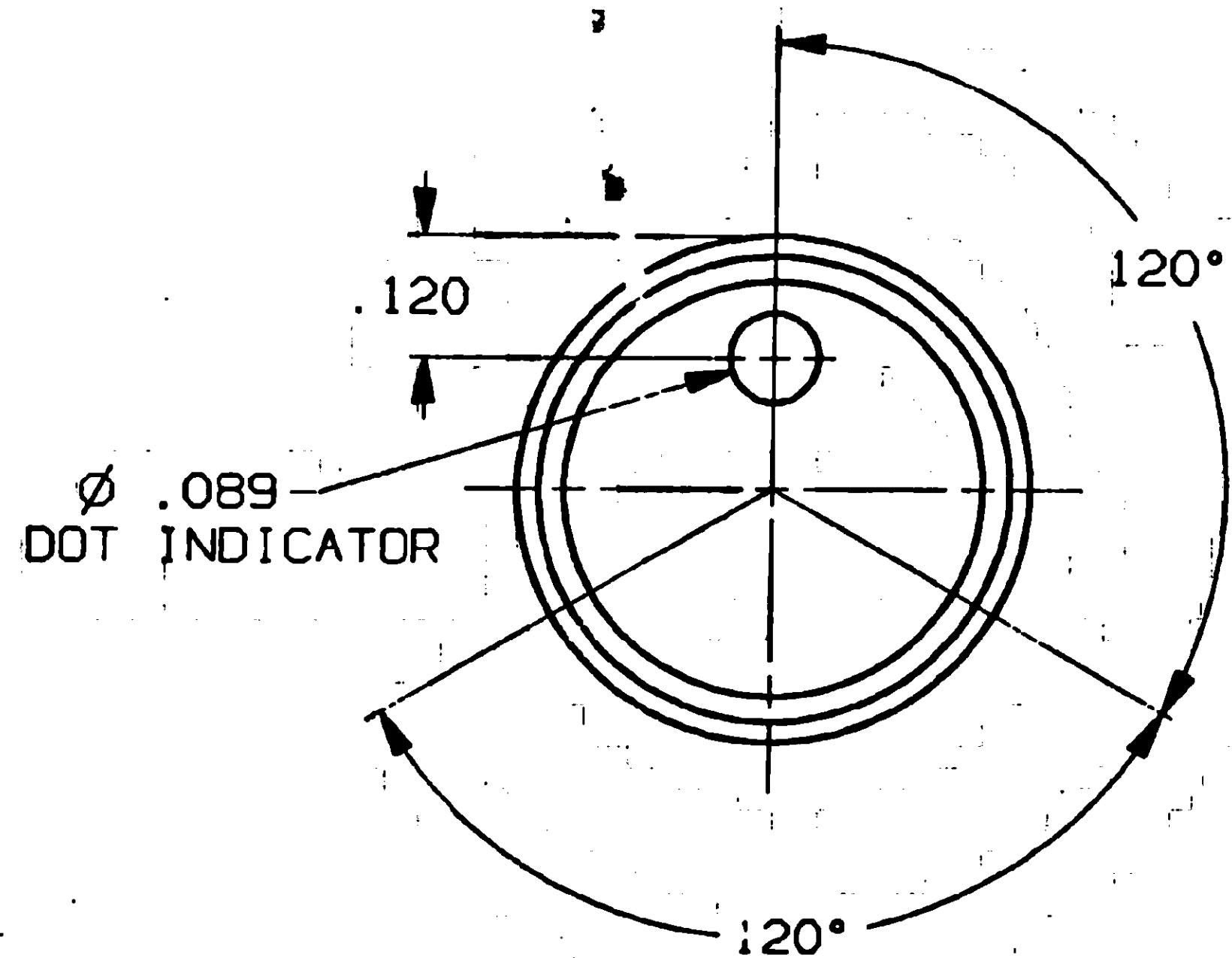


CONVERSION CHART

INCH	MM
.012	0.30
.020	0.51
.025	0.64
.089	2.26
.120	3.05
.126	3.21
.129	3.27
.150	3.81
.157	3.99
.251	6.38
.254	6.45
.256	6.50
.382	9.70
.500	12.70
.512	13.00
.625	15.88
.630	16.00
.740	18.80
.787	19.99
.937	23.80
1.062	26.97
1.250	31.75



MODEL NO.	A DIA.	B DIA.	C DIA.
KE-500AB-1/8	.500	.126/.129	.382
KE-500AB-1/4	.500	.251/.254	.382
KE-700AB-1/4	.740	.251/.254	.630
KE-900AB-1/4	.937	.251/.254	.787
KE-1250AB-1/4	1.250	.251/.254	1.062

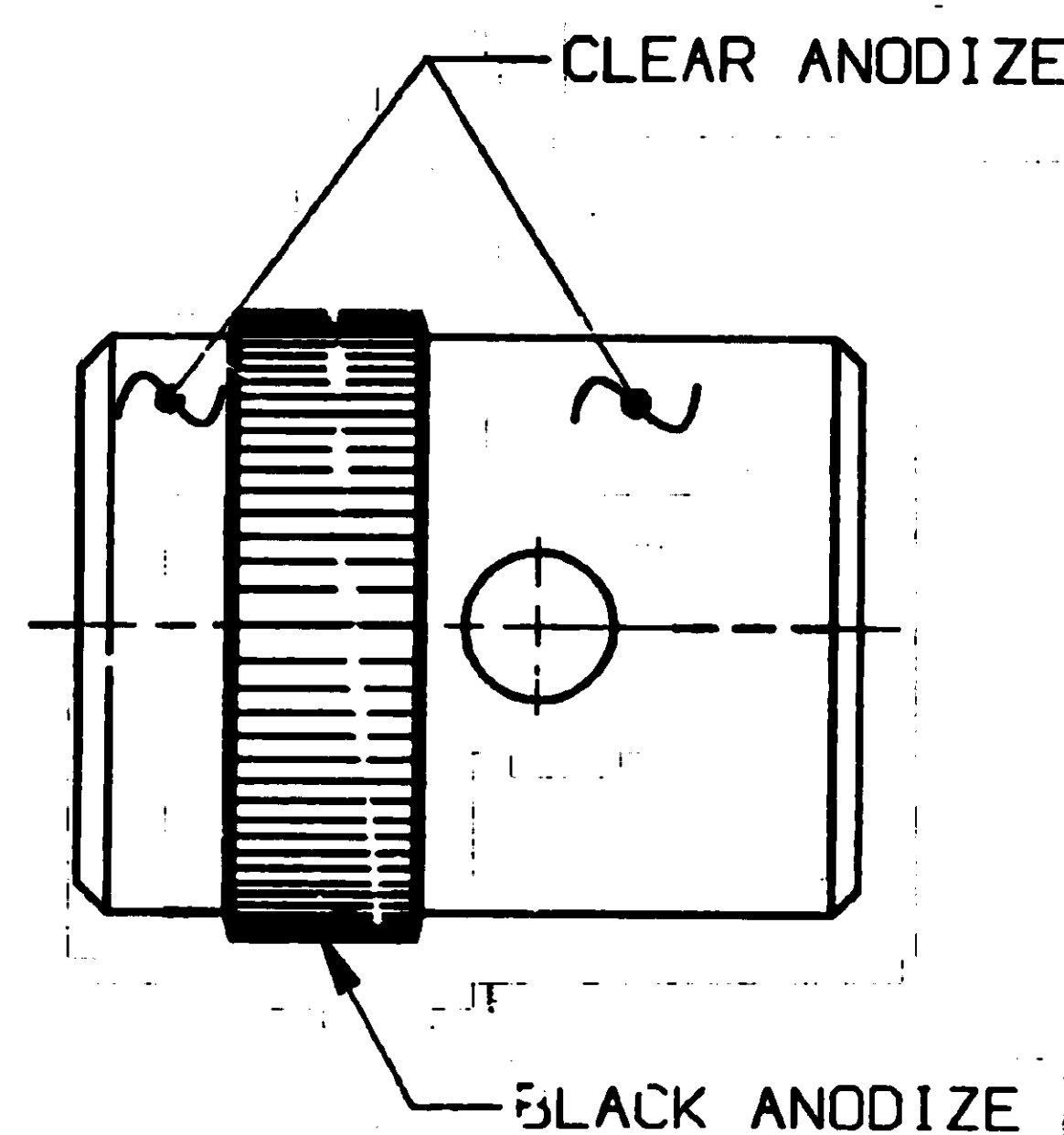
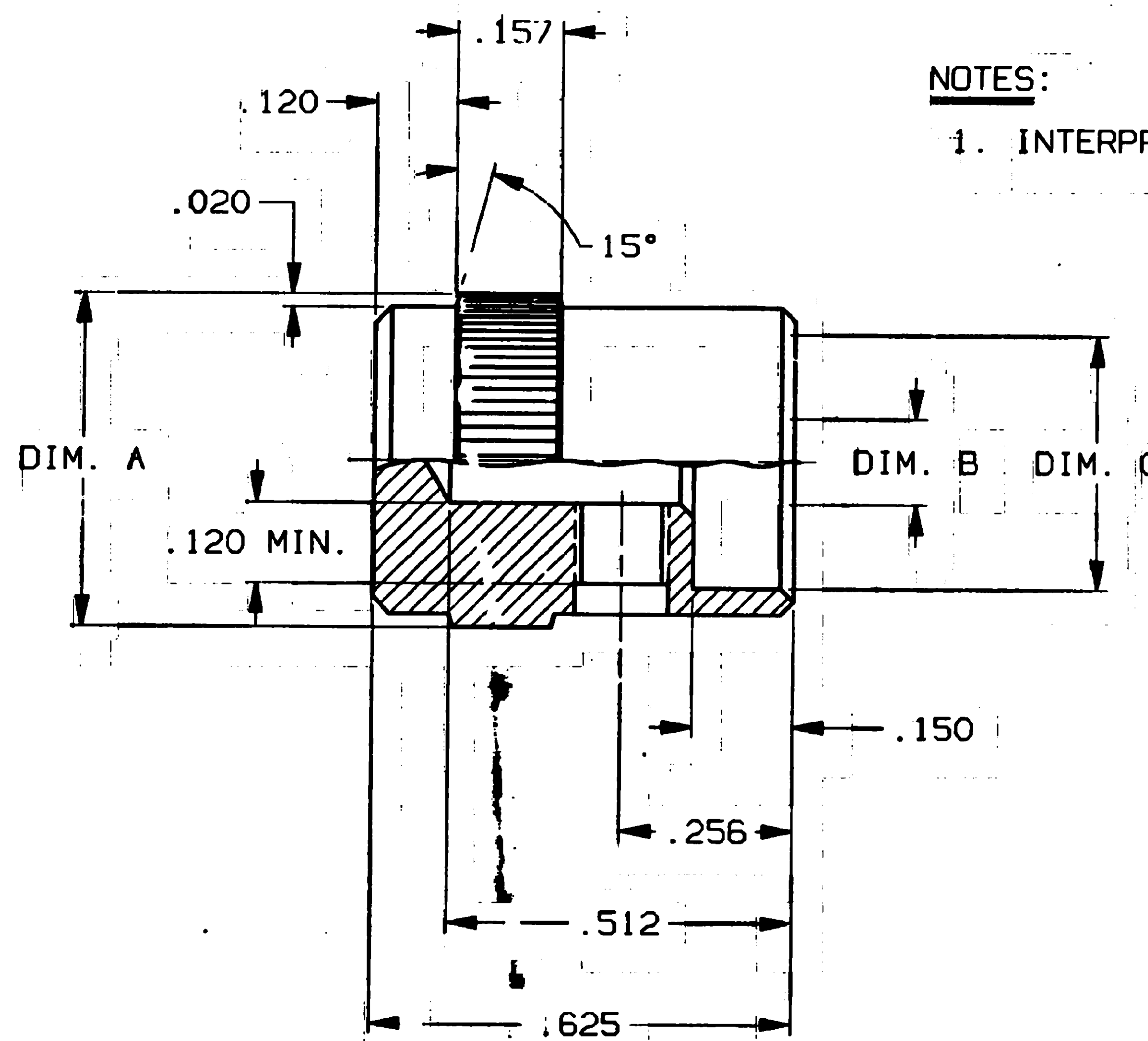
KE-500AB-1/8 AS SHOWN

SPECIFICATIONS:

MATERIALS: ALUMINUM
 FINISH: ANODIZED
 SET SCREW: #6-32 UNC-2A
 STAINLESS STEEL

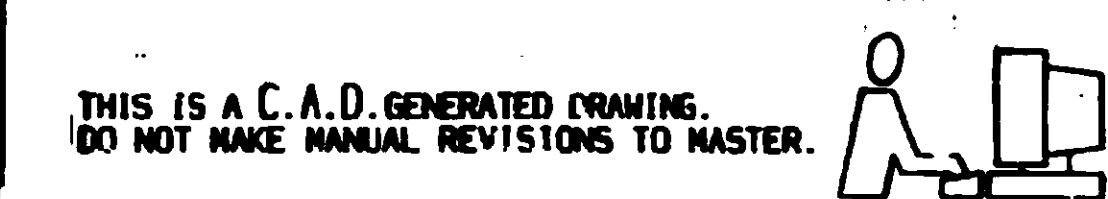
NOTES:

1. INTERPRET DRAWING PER ASME Y14.5M 1994.



OUTLINE DRAWING
 SPECIFICATIONS ARE SUBJECT TO CHANGES WITHOUT NOTICE

THIS IS A C.A.D. GENERATED DRAWING.
 DO NOT MAKE MANUAL REVISIONS TO MASTER.



AUGAT JOHN DIETSCH BLVD.
 AT LEBO RD FALLS, MASS. 02763

TITLE: **OUTLINE DRAWING**
 ALUMINUM KNOB
 DUAL ANODIZED

QWC NO. 80053 REV. 0

PRODUCT CODE: M11 SCALE: SHEET 1 OF 1



TOLERANCES (EXCEPT AS NOTED)
 ANGULAR = ±.01 (NON-CUMULATIVE)
 DECIMAL .XX
 DECIMAL .XXX
 DECIMAL .XXXX

UNLESS OTHERWISE SPECIFIED
 DIMENSIONS ARE IN INCHES
 DO NOT SCALE PRINT

FILE NAME: BASSOUT DIRECTORY: KNOBS
 MATERIAL: SEE SPECIFICATIONS
 FINISH: SEE SPECIFICATIONS

ORIGINAL DATE OF DRAWING: 10-13-95

DRAWN: S. KIRCORIAN DATE: 10-13-95
 CHECKED: DATE:
 APPROVED: P. Hagan DATE: 10-30-95
 CODE IDENT. NO. 91506
 QWC SIZE C
 NEXT ASSY:

REV 0
 INITIAL RELEASE
 ESR#A6989
 SEK 10-13-95
 APP'D: J. Hagan

REVISIONS
 INITIAL RELEASE
 ESR#A6989
 SEK 10-13-95
 APP'D: J. Hagan